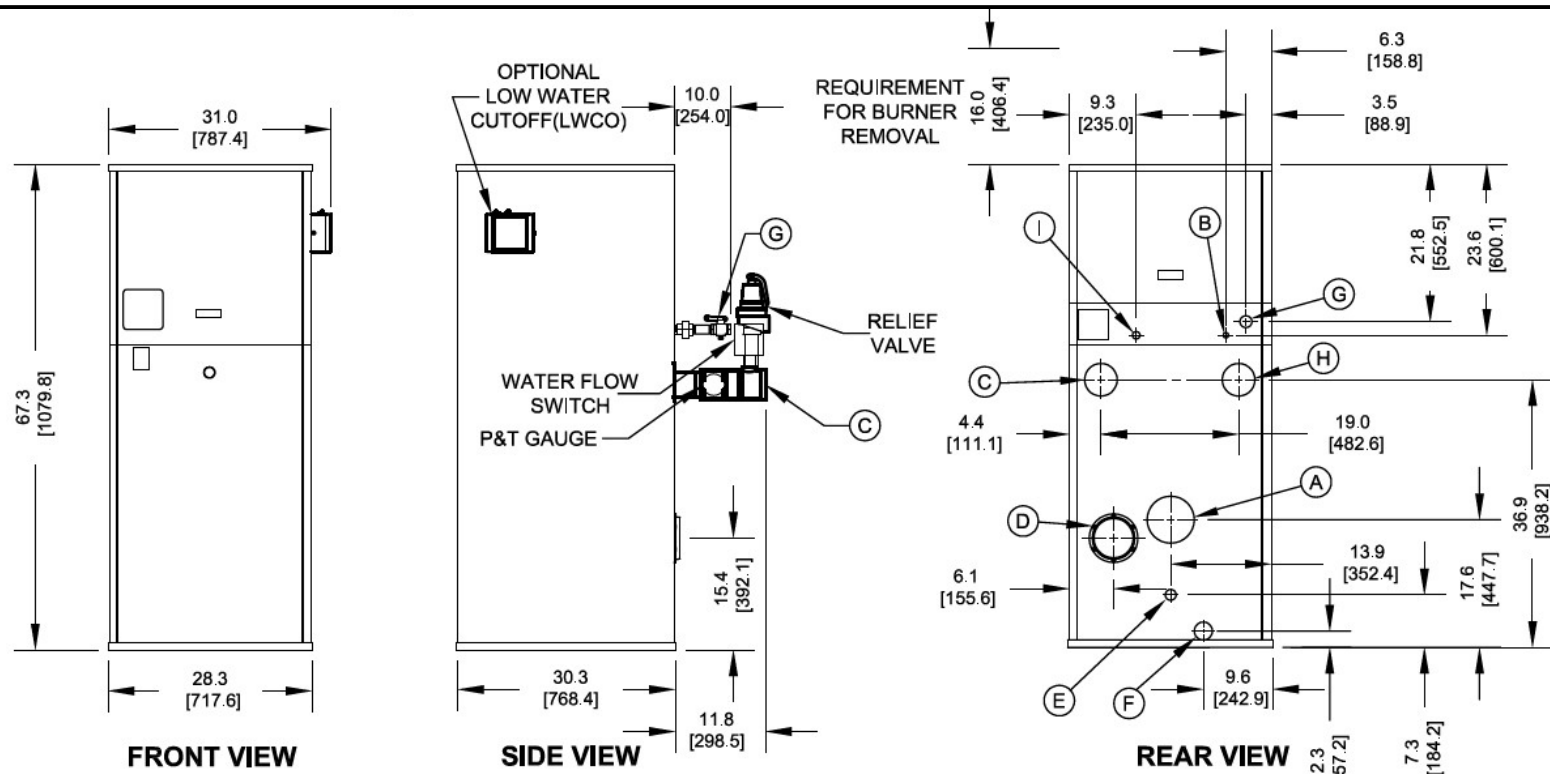


Submittal Data Sheet



| KEY | DESCRIPTION | |
|-----|---------------------------------|--|
| A | Flue Outlet | 6" [152.4] Diameter (AL29-4C SS) |
| B | Factory Installed Pilot Gas Lin | 1/4" [6/4] O.D. Tube |
| C | Water Supply to System | 3" NPT |
| D | Inlet Air | 6" [152.4] Diameter |
| E | Drain, Startup Condensate | 5/8" [15.9] O.D. Tube SS |
| F | Appliance Drain | 1" NPT |
| G | Gas Supply | 1 1/2" NPT |
| H | Water Return from System | 3" NPT |
| I | Optional Gas Train Vent | 3/4" NPT (D.B.&B & D.B.&B w/ POC Only) |

NOTES:

1. SEE O&M FOR REQUIRED INSTALLATION CLEARANCES.
2. DIMENSIONS SHOWN ARE FOR REFERENCE ONLY.
3. DIMENSIONS ENCLOSED IN [] ARE IN MM.

Submittal Data Sheet

RATINGS AND CAPACITIES

| | | |
|--------------------------|------------------------------|---------|
| Input (MBH): | 1,000,000 | BTU/HR |
| Output (MBH): | 880,000 | BTU/HR |
| Boiler Horsepower: | 26.3 | BTU/HR |
| Thermal Efficiency: | 88.0% | BHP |
| Heating Surface: | 175 | Sq.Ft. |
| Water Content: | 16.4 | Gallons |
| Fuel: | Natural Gas or LP Gas | |
| Firing Rate: | Reliable Modulation | |
| Burner Turndown: | 3:1 | |
| Low NOx Emissions: | <10 ppm | |
| Inlet Gas Pressure (NG): | See Chart at right | |
| Inlet Gas Pressure (LP): | See Chart at right | |

* This data supercedes data found on Table 3 of I&O Manual, per PRODUCT UPDATE issued June 6, 2024.

Shipping Weight, Approximate: **1,185** lbs

ASME Section IV (Max 160 PSIG / 210°F)

Setpoint range is 145-190°F

Adjustable, manual reset high limit setting of ≤ 200°F.

ASME HLW stamp MAWT is 210°F for the vessel. (For max setpoint, see Setpoint range.)

UL Certified to ANSI Z21.10.3/CSA 4.3



DIMENSIONS / CONNECTIONS

| | | |
|--|-----------------------------|---------------------|
| Height: | 67 3/8" | (Note 1) |
| Width: | 28 3/8" | (Note 2) |
| Length: | 30 3/8" | (Note 3) |
| Supply Connection: | 3" | |
| Return Connection: | 3" | |
| Vent / Air Intake Connections: | 6" Vent | 6" Intake |
| Condensate / Appliance Drain Connection: | 5/8" Condensate Tube | 1" NPT Drain |
| Gas Connection: | 1 1/2" | |

NOTES:

1. Height dimension is from floor to top of jacket.

2. Length is from jacket front to jacket rear.

3. Dimensions shown are for reference only

FLOWS AND PRESSURE DROPS

| Delta T | Flow (GPM) | ΔP (Ft. Hd) |
|---------|-----------------|-------------|
| 20°F ΔT | 82 (Max) | 3.24 |
| 40°F ΔT | 41 (Min) | 0.81 |

Electrical Supply Options

| | | |
|--------------------------|--------------------------|----------|
| <input type="checkbox"/> | 120v/60hz/1ph (Standard) | 7.5 amps |
| <input type="checkbox"/> | 208v/60hz/1ph | 6.6 amps |
| <input type="checkbox"/> | 230v/60hz/1ph | 6.4 amps |
| <input type="checkbox"/> | 208v/60hz/3ph | 6.0 amps |
| <input type="checkbox"/> | 230v/60hz/3ph | 6.0 amps |
| <input type="checkbox"/> | 460v/60hz/3ph | 3.0 amps |

Blower Motor (hp)

1-1/2

Relief Valve Options

| | |
|--------------------------|--------------------|
| <input type="checkbox"/> | 125 psi (STANDARD) |
| <input type="checkbox"/> | 150 psi (OPTIONAL) |

Inlet Gas Pressure

| SIZE | Nat. Gas Min. ("w.c.) | LP Min. ("w.c.) | Max |
|-------|--------------------------|--------------------|------------|
| 500 | 5.0" w.c. | 8.0" w.c. | 14.0" w.c. |
| 750 | 7.0" w.c.* | | |
| 1000 | 7.0" w.c.* | | |
| 1500 | 7.0" w.c.* | | |
| 2000 | 9.0" w.c.* | 9.0" w.c. | |
| 2000s | 7.0" w.c. | 8.0 | |
| 2500 | 6.0" w.c. | | |
| 3000 | 6.0" w.c. | | |

* NOTE: Optional natural gas train with 4" w.c. minimum inlet gas pressure
ONLY AVAILABLE on sizes 750, 1000, 1500 & 2000.

Submittal Data Sheet

| STANDARD EQUIPMENT | | OPTIONAL EQUIPMENT | | | | | | | | | | | | | |
|---|---|---|--------------------------|---------------|----------------|-------------------|--------------------------|--------------------------|--------------------------|------------------------|-----|--------------------------|--------------------------|--|--|
| <div style="background-color: #cccccc; text-align: center; font-weight: bold; padding: 2px;">PRESSURE VESSEL DESIGN</div> <p>Copper Fin-tube construction Bronze header design Gasketless heat exchanger ASME Section IV certified "H" stamp MAWP 160 PSI & max design temp 250°F 5-year heat exchanger warranty 20-year thermal shock warranty</p> | <div style="background-color: #cccccc; text-align: center; font-weight: bold; padding: 2px;">BOILER EQUIPMENT</div> <p>Siemens RWF55 operating control High limit w/ manual reset safety temperature control Water flow switch Low water cut-off with manual reset safety controller Outlet temperature sensor Combustion air switch Pressure and temperature gauge Safety relief valve (Optional pressure 30 - 150 PSI; See details above.) Single point electrical supply: (Available in: 1 and 3 phase options. See details above.)</p> | <div style="background-color: #cccccc; text-align: center; font-weight: bold; padding: 2px;">BURNER EQUIPMENT</div> <p>UL/FM/CSD-1 gas train Reliable Turndown Natural or LP gas Pilot gas valve / Pilot gas regulator Siemens SKP-75 gas valve Low and high gas pressure switches with manual reset</p> | | | | | | | | | | | | | |
| <div style="background-color: #cccccc; text-align: center; font-weight: bold; padding: 2px;">COMBUSTION DESIGN</div> <p>Maintenance-free ceramic burner Ultra-low NOx emissions (<10ppm) Whisper quiet operation (<50 dBA) Easy to service, 99% efficient industrial air filter Industrial cast aluminum blower assembly VFD Driven Blower Reliable electric spark-to-pilot ignition 10-year burner warranty Honeywell UV-Scanner</p> | <div style="background-color: #cccccc; text-align: center; font-weight: bold; padding: 2px;">SIEMENS RWF55 OPERATING CONTROL FEATURES</div> <p>Adjustable set point Remote set point (0-10v or 4-20 mA) Outdoor air temperature reset</p> | <div style="background-color: #cccccc; text-align: center; font-weight: bold; padding: 2px;">OPTIONAL EQUIPMENT</div> <p><input type="checkbox"/> Low gas pressure venturi, 4" wc (AVAILABLE ONLY on Models 750-2000) [FACTORY INSTALLED OPTION ONLY]</p> <p><input type="checkbox"/> Line Reactor Adds voltage / spike protection for the blower's VFD. (<i>Highly recommended for areas with dirty voltage.</i>)</p> <p><input type="checkbox"/> Honeywell 7800 Series display with ModBus Module Line Reactor Adds voltage / spike protection for the blower's VFD. (<i>Highly recommended for areas with dirty voltage.</i>)</p> <p><input type="checkbox"/> Outdoor Air Sensor</p> <p><input type="checkbox"/> Condensate neutralizer:</p> <div style="display: flex; justify-content: space-between;"> <input type="checkbox"/> 850 MBH <input type="checkbox"/> 1,200 MBH </div> <div style="display: flex; justify-content: space-between;"> <input type="checkbox"/> 2,000 MBH <input type="checkbox"/> 5,000 MBH </div> <p><input type="checkbox"/> Pump Kit (Boiler Circulation Pump, Pump Flange Kit Sized based on a 20°F Delta T)</p> <p><input type="checkbox"/> Annual Maintenance Kit</p> <p><input type="checkbox"/> System Temperature Sensor</p> <p><input type="checkbox"/> ModBus RS485 communication for Siemens RWF55 and Honeywell Flame Safeguard Control (Boiler to BMS)</p> <p><input type="checkbox"/> Universal comms. gateway (BACnet MS/TP, BACnet/IP, N2, Modbus TCP)</p> <p><input type="checkbox"/> Local / remote switch</p> <p><input type="checkbox"/> Alarm bell with silencing switch</p> <p><input type="checkbox"/> Relays: <input type="checkbox"/> General Alarm <input type="checkbox"/> Boiler Status</p> <p><input type="checkbox"/> Conductor Sequencing Panel: Req. for multiple EVA applications without BMS. Contact your RSM with Questions.)</p> <p>The Conductor Sequencing Panel manages multiple condensing & non-condensing, small & large heat output, new and/or existing boilers (full modulation), and steam or hot water applications. It helps improve system efficiency by selecting and modulating the right boiler to match operating conditions. The Conductor offers a single point boiler plant Energy Management System (EMS) interface including Modbus TCP/IP, Modbus RTU RS485, BACnet/IP and BACnet MSTP standard. If Lonworks needed, add for the separate Lonworks gateway.</p> | | | | | | | | | | | | | |
| <div style="background-color: #cccccc; text-align: center; font-weight: bold; padding: 2px;">VENTING</div> <p>Sealed or room air combustion Direct vent (sidewall or vertical) (Cat IV) Conventional venting (Cat II) <i>NOTE: This is NOT a Cat 1 Vent appliance.</i></p> | <div style="background-color: #cccccc; text-align: center; font-weight: bold; padding: 2px;">IMPORTANT NOTE: For installation and operation only in climates where the ambient temperature will not be less than 32 °F (0 °C). Appliance must be protected from standing water. Install on a level platform. Do not install this appliance under an overhang less than 3 feet from its top. The area under the overhang must be open on 3 sides. Never install directly on carpeted flooring.</div> | | | | | | | | | | | | | | |
| <div style="background-color: #cccccc; text-align: center; font-weight: bold; padding: 2px;">EXTENDED WARRANTY OPTIONS AVAILABLE:</div> <table style="width: 100%; border-collapse: collapse;"> <thead> <tr> <th style="text-align: left; padding: 5px;"></th> <th style="text-align: center; padding: 5px;"><u>3-Year</u></th> <th style="text-align: center; padding: 5px;"><u>5-Year</u></th> <th style="text-align: center; padding: 5px;"><u>10 Year</u></th> </tr> </thead> <tbody> <tr> <td style="padding: 5px;"><u>Parts Only</u></td> <td style="text-align: center; padding: 5px;"><input type="checkbox"/></td> <td style="text-align: center; padding: 5px;"><input type="checkbox"/></td> <td style="text-align: center; padding: 5px;"><input type="checkbox"/></td> </tr> <tr> <td style="padding: 5px;"><u>Parts and Labor</u></td> <td style="text-align: center; padding: 5px;">N/A</td> <td style="text-align: center; padding: 5px;"><input type="checkbox"/></td> <td style="text-align: center; padding: 5px;"><input type="checkbox"/></td> </tr> </tbody> </table> | | | <u>3-Year</u> | <u>5-Year</u> | <u>10 Year</u> | <u>Parts Only</u> | <input type="checkbox"/> | <input type="checkbox"/> | <input type="checkbox"/> | <u>Parts and Labor</u> | N/A | <input type="checkbox"/> | <input type="checkbox"/> | | |
| | <u>3-Year</u> | <u>5-Year</u> | <u>10 Year</u> | | | | | | | | | | | | |
| <u>Parts Only</u> | <input type="checkbox"/> | <input type="checkbox"/> | <input type="checkbox"/> | | | | | | | | | | | | |
| <u>Parts and Labor</u> | N/A | <input type="checkbox"/> | <input type="checkbox"/> | | | | | | | | | | | | |